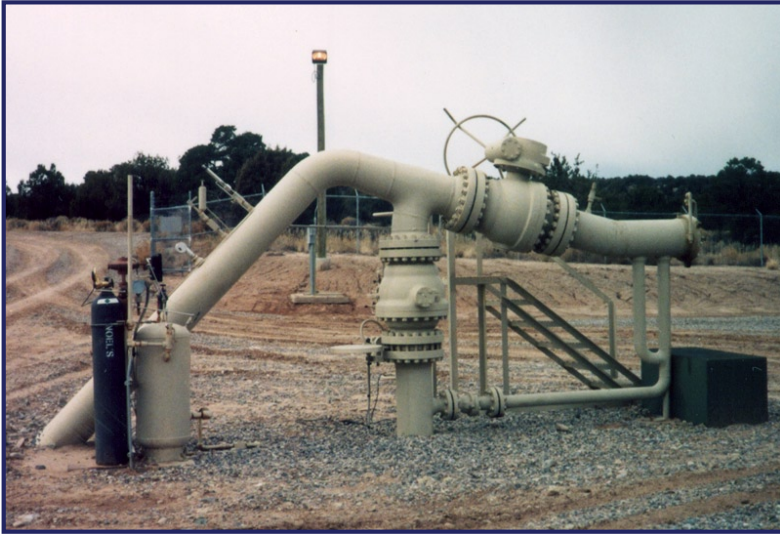


■ ENGINEERING ■ ARCHITECTURE ■ DESIGN-BUILD ■ GEOSPATIAL SOLUTIONS ■ SURVEYING



Merrick & Company provided engineering design, procurement, permitting, and construction management services for Blackwood & Nichols Pump Mesa Gas and Water Gathering System in the San Juan Basin of New Mexico. The Pump Mesa system, with a total ditch length of 18 miles, collects produced fluid from 18 wells and was designed to handle gas production of 45 MMscfd, and water production of 11,000 bwpd.

Merrick procured all materials and services for the project including line pipe, ASME code vessels, valves, fittings, and installation contractor. Merrick solicited, evaluated, and awarded bids; contracted and expedited; received; and transferred to the contractor all client-furnished materials for the project.



Merrick's construction management team provided full-time pipeline installation inspection, coordination of third-party radiograph (X-ray) inspection, and other quality functions. Merrick's presence at the job-site was led by our full-time construction engineer, accompanied by a competent crew of pipeline inspectors.

Due to the high quality of design drawings and specifications and the all-inclusive bid package provided to the contractor for bidding a fixed-price contract, the Pump Mesa project experienced minimal change order requests by the contractor.

The Pump Mesa project demonstrates Merrick's full-service engineering, permitting, procurement, and construction management capabilities for oil and gas gathering and treating facilities.

