

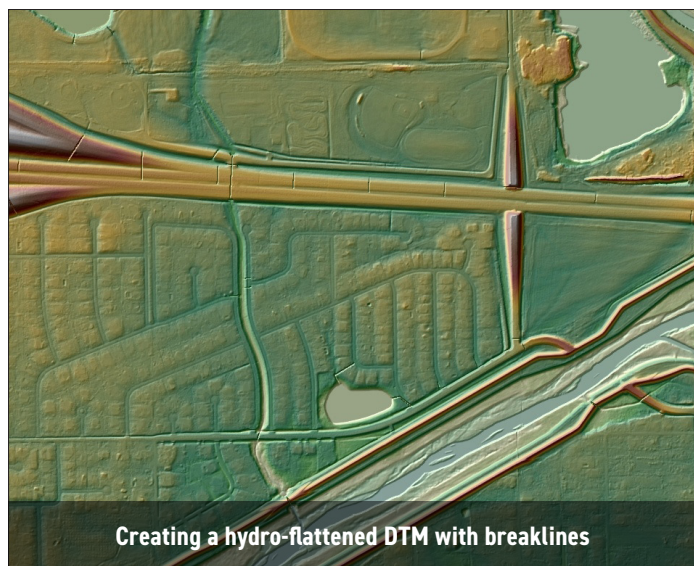
# BENEFITS OF MARS® PRODUCTION VS. MARS® EXPLORER

[www.merrick.com](http://www.merrick.com) | [hello@merrick.com](mailto:hello@merrick.com)

The MARS® Production software offers the highest level of functionality and user tools. It also includes the MARS® QC Module, which allows users to efficiently identify and mitigate data quality issues.

## Benefits of MARS® Production include:

- All the functionality of MARS® Explorer and the QC Module
- Tools for compiling, editing, and otherwise manipulating 3D shapefile breaklines
- Unlimited number of threads for multi-threaded functions (vs. four in MARS® Explorer)
- Start and stop coverage tracking (These tools help in Editing and QC work by creating a shapefile showing the areas (window extents) that have been displayed in the current session.)
- Save tracking to shapefile



## Additional user tools, including:

- Show breakline vertices
- Merge shapefiles
- Edge match for shapefiles
- Depression coder
- Complex polygons to simple
- Z Fix Using Stream Rule
- Change LAS date
- Reference reclass
- Reference reclass (closest distance)
- Remove duplicates in LAS
- Z-shift for LAS files
- Z-shift on intensity
- Z-shift on class
- Single collection scan to multiple
- Float grid to TIFF
- Float grid to ERDAS IMG
- TIFF Tag Editing
- TIFF Origin Rounding
- TIFF Nullifier

