

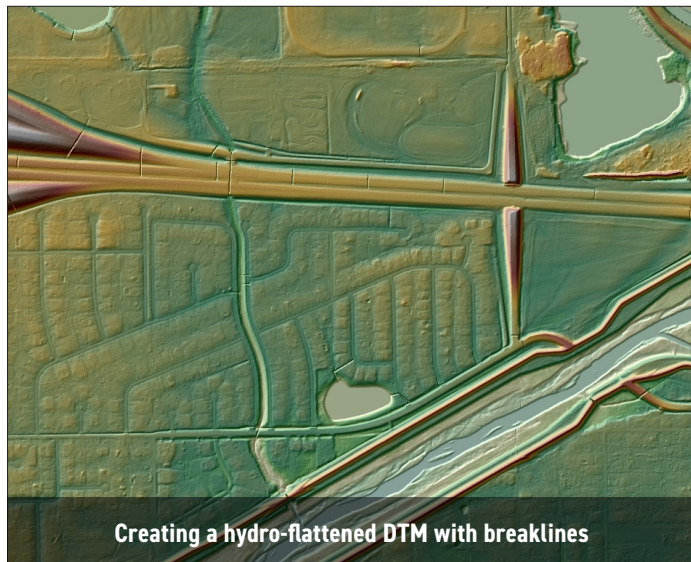
BENEFITS OF MARS® PRODUCTION VS. MARS® EXPLORER

www.merrick.com | hello@merrick.com

The MARS® Production software gives you the highest level of functionality and user tools. It also includes the MARS® QC module, which allows our users to efficiently identify and mitigate data quality issues.

Benefits of MARS® Production include:

- All the functionality of MARS® Explorer and the QC Module
- Tools for compiling, editing, and otherwise manipulating 3D shapefile breaklines
- Unlimited number of threads for multi-threaded functions (vs. four in Explorer and Explorer QC)
- Start and stop coverage tracking (These tools help in Editing and QC work by creating a shapefile showing the areas (window extents) that have been displayed in the current session.)
- Save tracking to shapefile



- Additional user tools, including:
 - Show breakline vertices
 - Merge shapefiles
 - Edge match for shapefiles
 - Depression coder
 - Complex polygons to simple
 - Change LAS date
 - Reference reclass
 - Reference reclass (closest distance)
 - Remove duplicates in LAS
 - Z-shift for LAS files
 - Z-shift on intensity
 - Z-shift on class
 - Single collection scan to multiple
 - Float grid to TIFF
 - Float grid to ERDAS IMG
 - TIFF nullifier

