



GEOMATICS

Surveying | Geospatial | Consulting | Engineering | Architecture | Commissioning | Design-Build



MERRICK®



www.merrick.com

Integrity. Trust. Partnership.

We're your trusted partner for end-to-end geospatial and surveying services. Our in-house surveyors; geospatial and GIS professionals; engineers; architects; and scientists provide you with a full-service resource base that can't be found anywhere else. Our team provides you with accurate data the first time so you can make decisions with confidence. We've proven this in our work with clients across a variety of markets.

ENERGY

- Transmission Line Routing, Mapping, and Modeling
- Power Distribution Design, Engineering, and Asset Mapping and Inventory
- Oil & Gas Inspection, Surveying, and Mapping

GOVERNMENT

- Federal (USGS, USACE, USDA, NRCS, USFS, and FEMA)
- State & Local (proven DCA experience, numerous state and local on-call contracts)

NATIONAL SECURITY

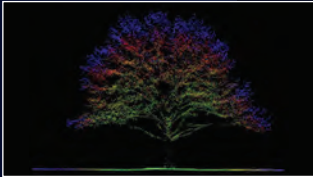
- Mapping and Analysis for Defense and Intelligence Agencies

INFRASTRUCTURE

- Land Development Survey and Topographical Mapping
- Water, Sewer, and Storm Sewer Survey and Mapping
- In-house SUE Services

Our Services

We'll support you through the entirety of your project, from project planning and multi-sensor data acquisition to data processing and data integration.



LIDAR

Airborne (Wide Area/Corridor) | Terrestrial (High Definition Scanning)
NERC Clearance Assessments | Hydrographic Datasets
Biomass Calculations | Lidar-Based Digital Twins | Topographic Mapping



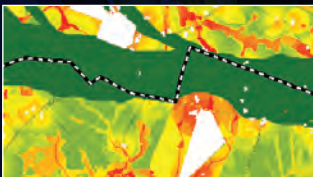
SURVEY

Boundary/Cadastral Surveys | ALTA/NSPS Land Title Surveys
Utility As-Built Surveys | Construction Staking
Route & Alignment Surveys | Bathymetric Surveys



AERIAL MAPPING

Digital Orthophotography | Hyper/Multi Spectral/RGB
Planimetric Datasets | Unmanned Aircraft Systems (UAS)

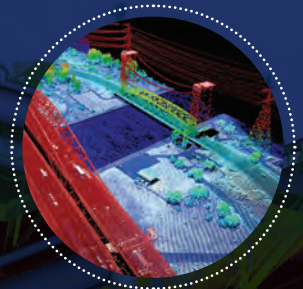


GIS

Dataset Creation & Management | EPRI -base Routing and Siting
Feature & Attribute Collection and Audit
Application Development | Staff Augmentation

Software Products to **Optimize Your Data**

Merrick Advanced Remote Sensing (MARS®) software is a stand-alone, Windows®-based application specifically designed for processing, analyzing, and managing terrain data.



Scan to learn more

MERRICK BY THE NUMBERS



FOUNDED
in **1955**



EMPLOYEES
1100+

29

OFFICES in

3

COUNTRIES

100% 
EMPLOYEE
OWNED



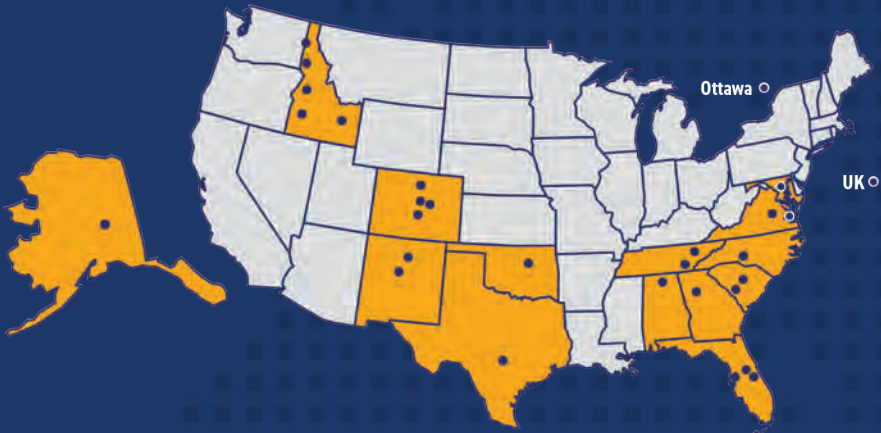
7

CONTINENTS
worked on

YOUR DATA MATTERS.

You can count on us to deliver accurate, innovative geospatial and mapping solutions for all your project needs.

LOCATIONS





Merrick & Company Corporate Headquarters

8051 E. Maplewood Ave., Suite 300

Greenwood Village, CO 80111

+1 303-751-0741 | hello@merrick.com

www.merrick.com